

# BOXactivation User guide

BOX telematics limited

20 March 2009

V1.01



BOX telematics limited  
Roman Park, Roman Way  
Coleshill, West Midlands  
B46 1HG

+44(0)1675 434200  
customerService@boxtelematics.com

[www.boxtelematics.com](http://www.boxtelematics.com)  
[www.boxgateway.com](http://www.boxgateway.com)



## Document History

V1.00 21 June 2007

- Release

V1.01 20 March 2008

- Slight modifications to the asset registration process on both the Windows and PDA versions.

## **INTRODUCTION**

This document has been generated to give a simple summary of the BOXgateway activation tool. It is not exhaustive and it does not deal with installation procedure.

It will show give the user an overview of how to register, edit and decommission assets with the BOXgateway Data Collection System (DCS). When remote devices are registered with the DCS, data that is collected from the asset is accessible using the SpotOn application or via BOX telematics web services.

This guide is split into 2 sections

- Section 1: BOXactivation – PC version
- Section 2: BOXactivationPDA – PDA version

If you require information on installation please call or email our customer help line

### Contact details

BOX telematics ltd operate a customer help line between 9.00am to 5.00pm Monday to Friday.

### Customer Service

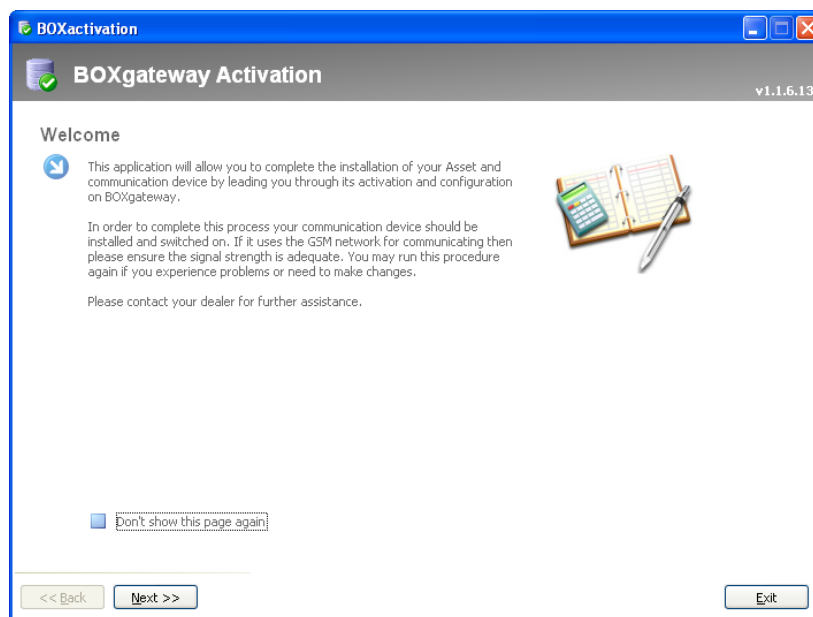
Email [support@boxtelematics.com](mailto:support@boxtelematics.com)

Tel +44(0)1675 434230

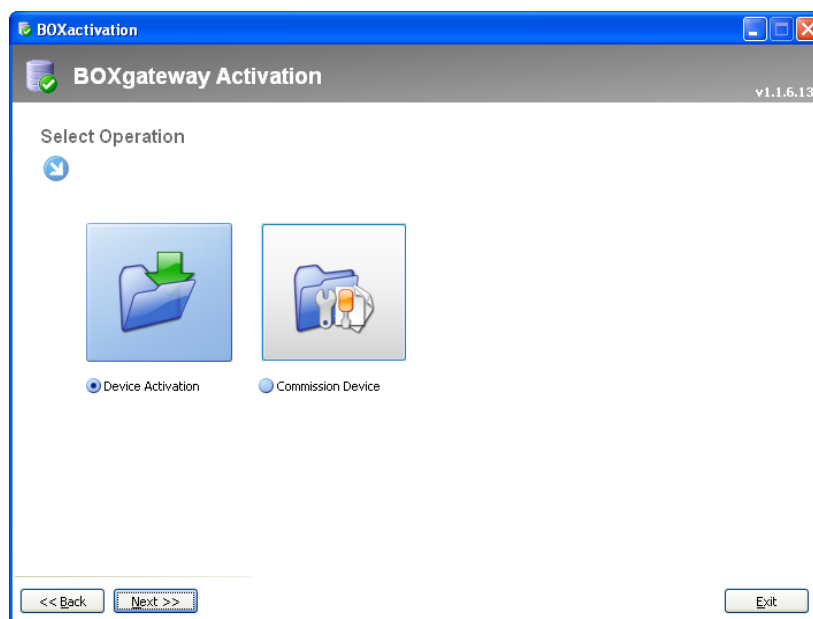
## Section 1: BOXactivation

### Registering your asset with BOXgateway

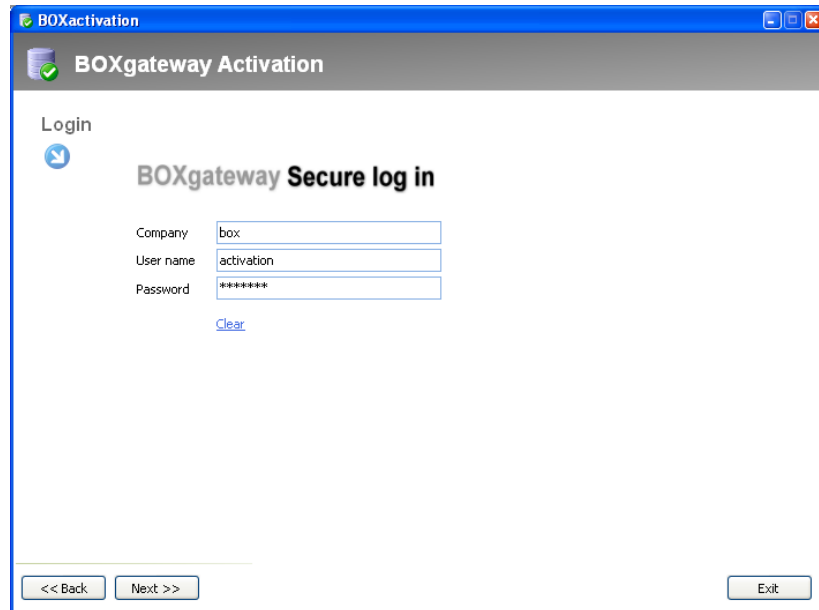
After program installation you can start the BOX activation software from the PC start menu, the following screen will load. Click Next >>.



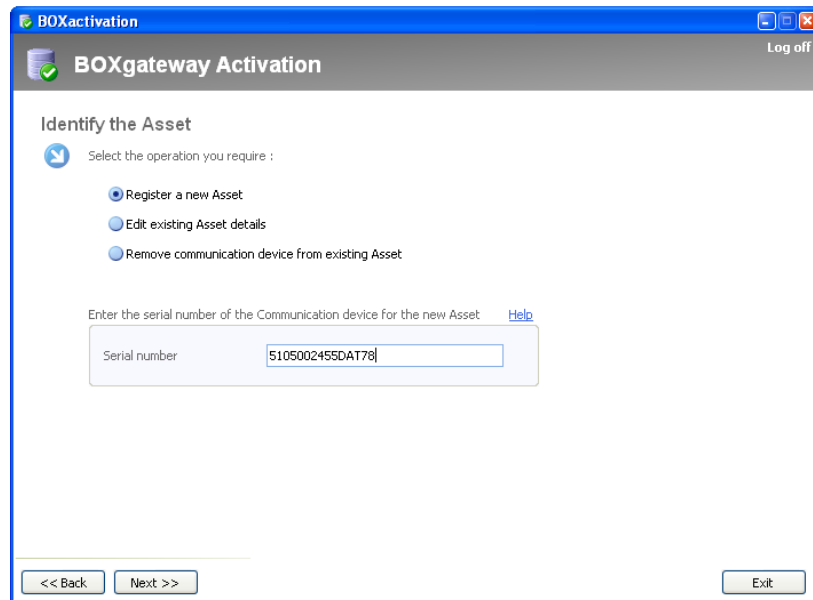
Please select "Device Activation" then click Next >>.



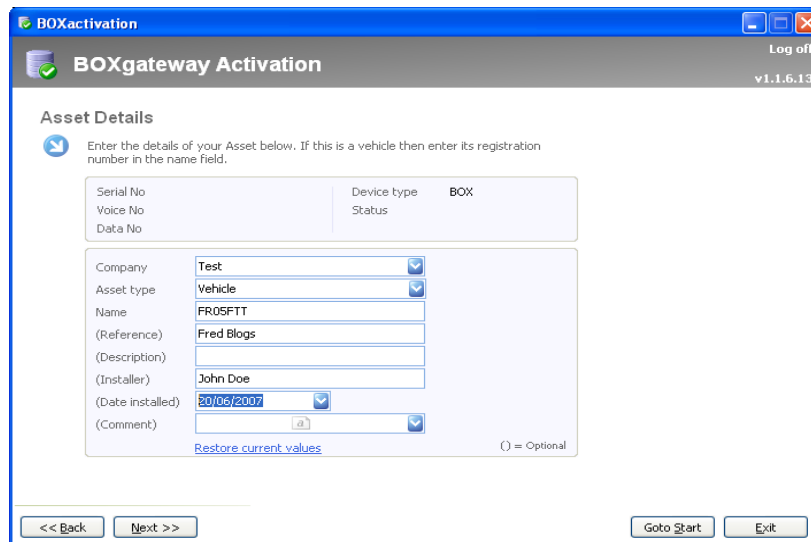
Log in using the details provided to you and then click Next >>.



To register your new Asset with the BOXgateway Data Collection System, simply select "Register a new Asset" and enter the Serial Number of the device you have fitted. Click Next >>.

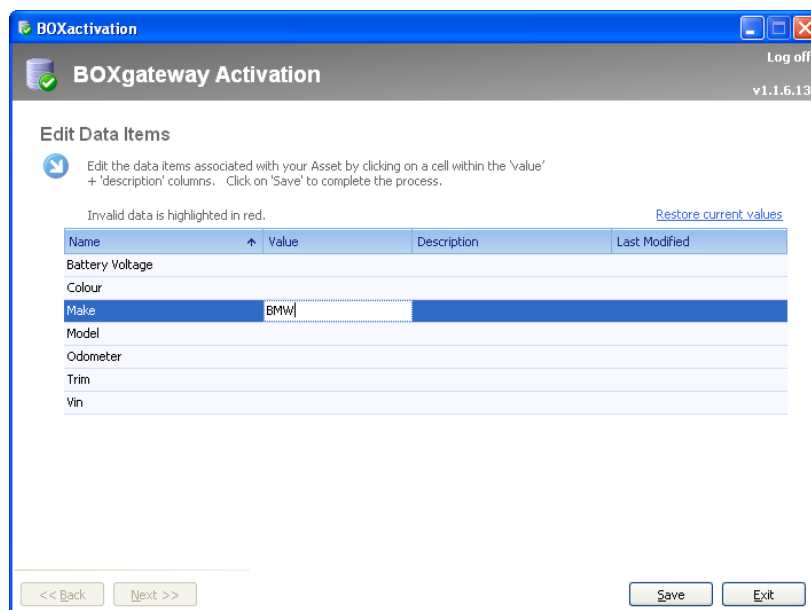


If the information you have entered is correct the screen below is loaded the drop downs can be used to select "Company" and "Asset Type". The Name field is also mandatory. Click Next>>.



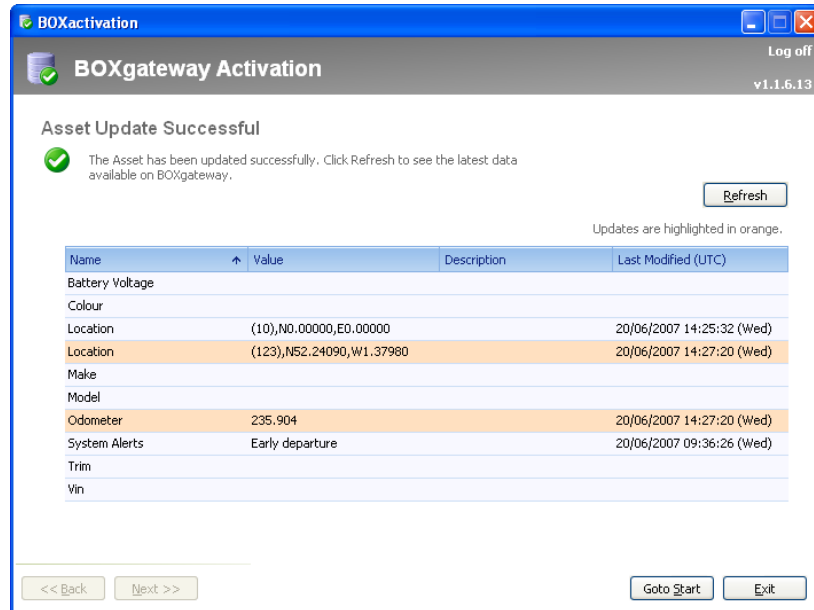
Note: At this point if your asset is a static device and a position location is required a page will load allowing this information to be entered (not shown here).

This screen enter specific details about the asset type e.g. make, model. Click Next >> when finished. If there are any errors in input these will be highlighted next to the appropriate item.



Name	Value	Description	Last Modified
Battery Voltage			
Colour			
Make	BMW		
Model			
Odometer			
Trim			
Vin			

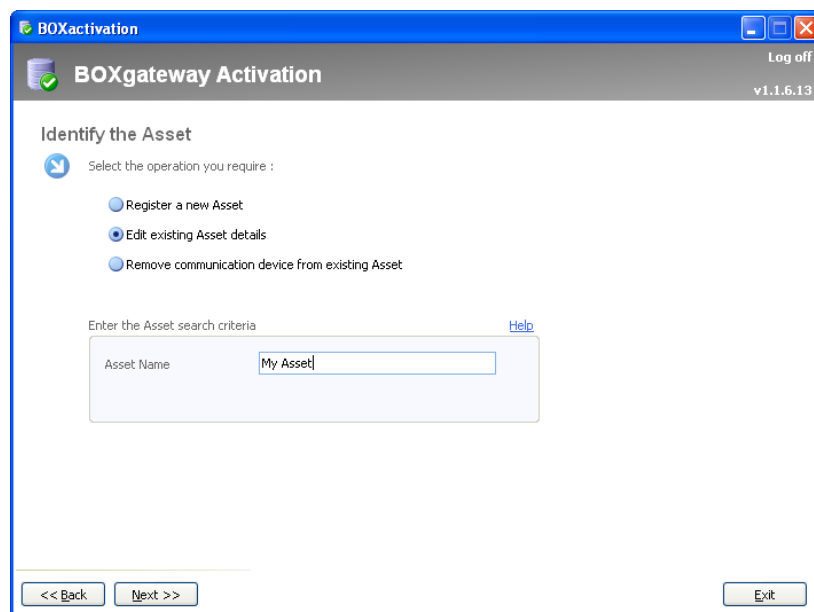
The asset has now been added to the Database and is collecting data. The final screen allows you to see the data that has been collected for your asset. Rows that are highlighted orange have just been updated.



Note: The Log off link can be used at any time and Logs the current user out and redirects you to the logon page.

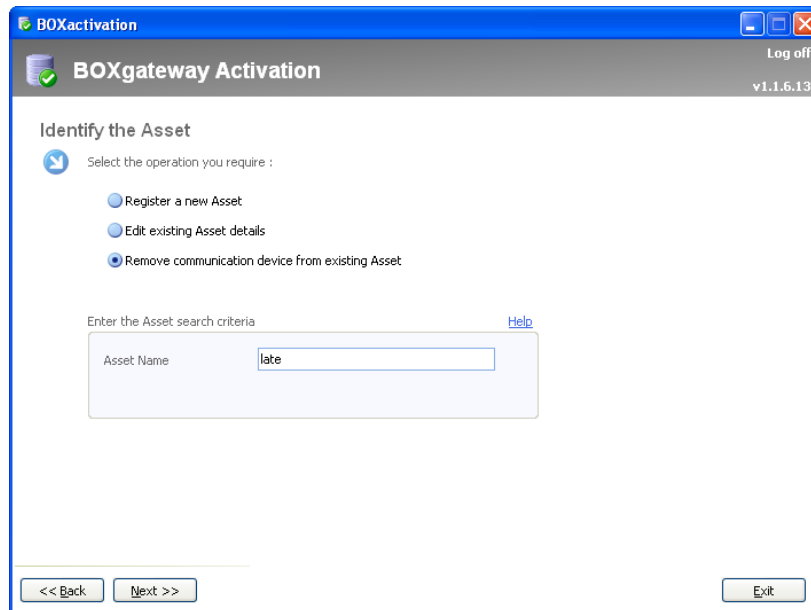
## Editing your asset with BOXgateway

To Change any attributes of your asset use the option "Edit existing Asset details". Enter the name of the asset and click Next >>.

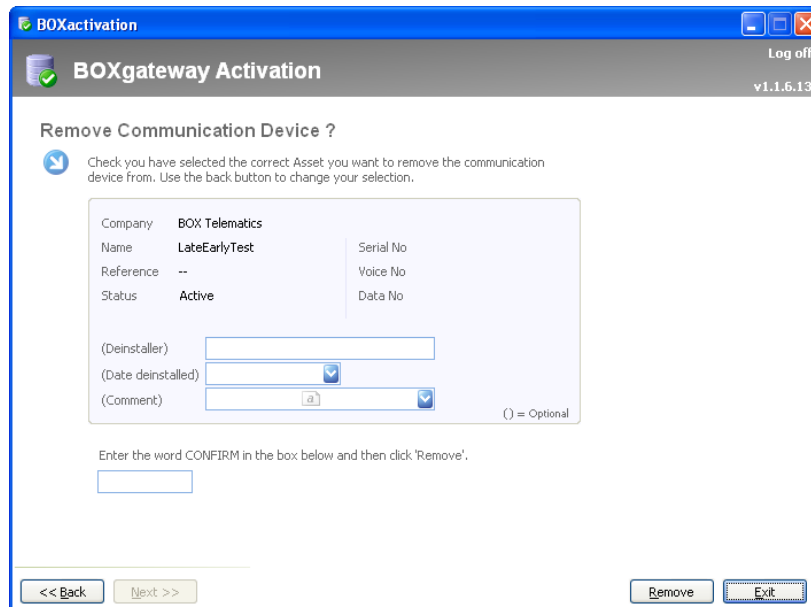


## Decommission your asset with BOXgateway

To decommission (remove) your asset from BOXgateway use the "Remove communication device from your existing asset", and enter the asset name. Click Next >>.



Check with this screen this is the correct asset to be removed. Enter the de-installer name, date and comment. These fields are optional. When you have entered all the relevant information, type confirm the click Remove.



## Section 2: BOXactivationPDA

### Installation

- Open a web browser on the PDA and in the address bar type :-  
<http://www.boxgateway.com/boxactivation/boxactivationpda.cab>
- A save dialogue box will then be displayed. Ensure that the 'Open file after Download' option is ticked then click 'Yes' to download the .cab installation file. If the file already exists on the PDA then click 'Yes' to overwrite it.
- When the file has downloaded it will begin to install itself to the PDA. Click 'Yes' to continue.
- If there is a previous version of BoxActivation installed a message will be displayed asking if you would like to remove the previous version, click 'OK' to remove the old version. BoxActivation will now install itself to the PDA.

## Registering your asset with BOXgateway

After program installation you can start the BOX activation software from the PDA start menu, the following screen will load. Click 'Next >'.



Log in using the details provided to you and then click 'Next >'.



Please register your new Asset with the BOXgateway Data collection system. Select "Register a new Asset" and enter the Serial Number of the device you have fitted. Click 'Next >'.



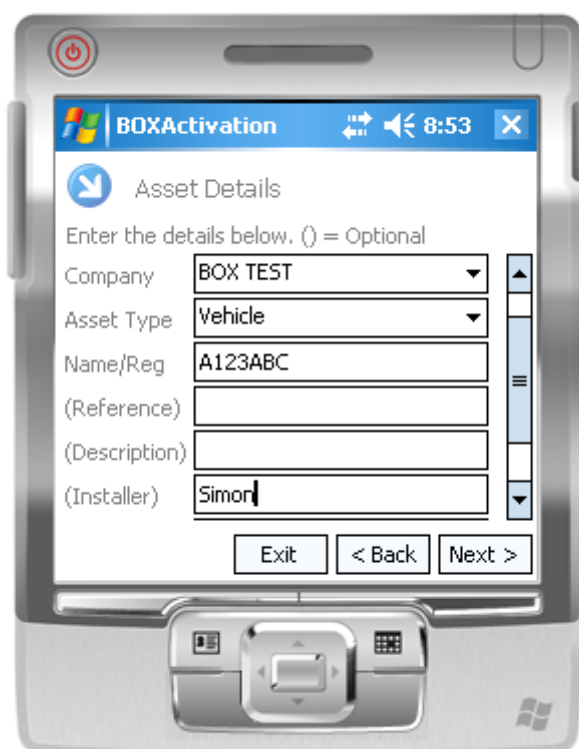
If the information you have entered is correct the Asset Details screen will be loaded.

Select the required company and asset type and enter the Asset Name/Vehicle registration. These are mandatory.

All other fields are optional.

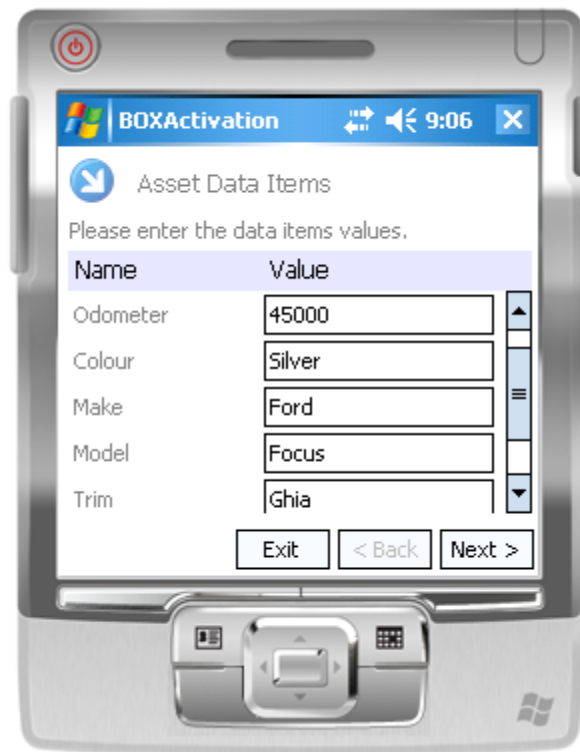
When finished click 'Next >' to enter the specific information for the selected Asset Type (e.g. make/model/colour)

Note



Note: At this point if your asset is a static device and a position location is required a page will load allowing this information to be entered (not shown here).

This screen enter specific details about the asset type e.g. make, model. Click Next > when finished. If there are any errors in input these will be highlighted next to the appropriate item.



The final screen allows you to see if any data has been collected for the Asset. Rows that begin with an orange highlight have just been updated. Click the 'Refresh' link to check for new data.

If you need to change a value click '< Back'

When satisfied with the data click 'Start >' which will take you back to the Asset Tasks page



## Decommissioning an asset

Login as described in the previous section. Select "Remove comm. Device from Asset". Enter the Asset name / Vehicle registration or the Serial Number of the device you wish to remove then Click 'Next >'. If the asset/device is found the decommissioning page will be loaded.



Enter the deinstaller name, date and comment. These fields are optional. Click 'Next >' to deinstall the asset.





## Contact details

If you have any queries with the application not covered in this document please do not hesitate to contact us.

BOX telematics ltd operate a customer help line between 9.00am to 5.00pm Monday to Friday.

Customer Service

Email [support@boxtelematics.com](mailto:support@boxtelematics.com)

Tel +44(0)1675 434230